

# M1. Social Communication in Sustainable Rural Communities

## M2. Environment Quality Modules rationale

# Modules rationale

M1. Social Communication in  
Sustainable Rural Communities  
M2. Environment Quality

Dana PERNIU

Codrina CZESNEK

Camelia DRAGHICI

Transilvania University of Brasov, Romania

# Module rationale

## (1) OERs design

### information design

→ content – relevant, adequate, useful

**instructional design:** transformative learning paradigm

**interface design:** clarity, attractiveness, readability, accessibility

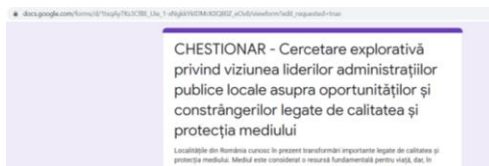
**interaction design:** learner/ learning material, learners, learner/  
instructor

when educational content is connected to the learner's own knowledge and reality, learning becomes relevant and useful

**which is the rural citizens' perception of the environmental major issues?**

# Modules rationale

## (2) SURVEY design and development



→ **general aim:** to find out the perceptions of the public administration leaders, from rural communities, on the opportunities and constraints coming from the (local) natural environment

→ **survey:** 19 open items + 6 items for socio-demographic data

→ **language:** Romanian + English

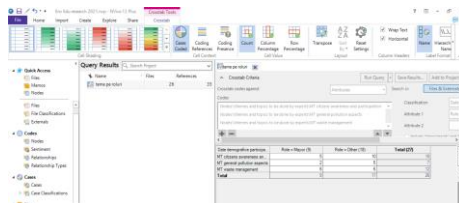
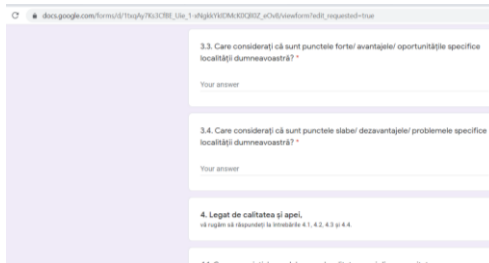
→ **target groups:** representatives of public administration of rural communities **27 respondents (19 higher education degree)**

→ **survey distribution period:** April - June 2021

→ **survey application:** 6 face to face + 21 on-line answers

→ **selected questions:** to assess the perception of basic concepts related to environmental quality

→ **data processing:** NVivo 12 software



# Modules rationale

## (3) content development: survey results

**Q1:** Which is the first word/ expression that comes to your mind when you think about the **natural environment** in your city/ community?

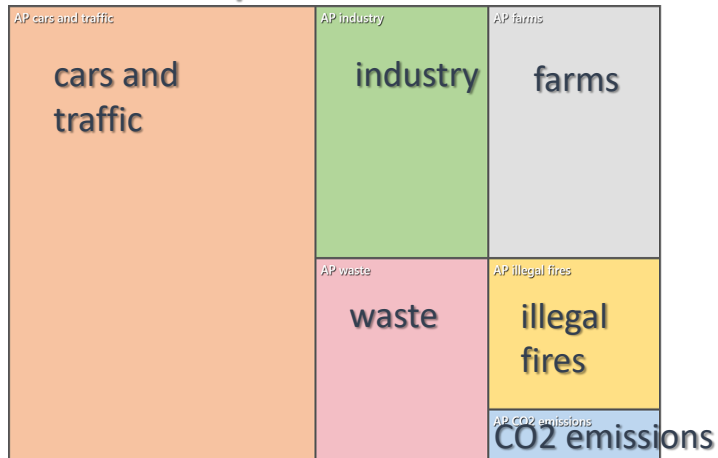
- **health**
- **clean/ cleanliness**
- **nature/ natural**
- **preserve**
- **harmony**

### *Human-nature connectedness (HNC) recognition*

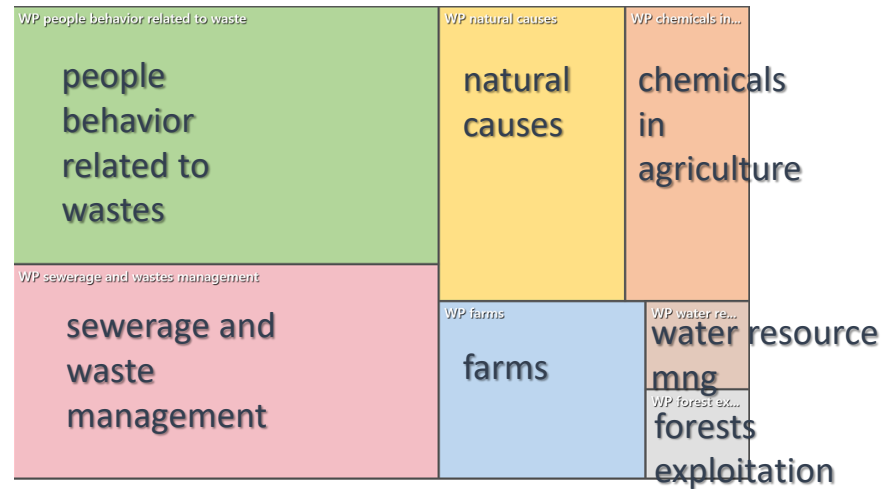
- key concept for valuing sustainability and leveraging sustainability changes in socio-ecological systems
- **information provided in modules** should articulate knowledge & skills & attitudes **to understand the complexity in interlinked natural, social and built environment.**

## Q3-5: Perceived environmental quality in local environment

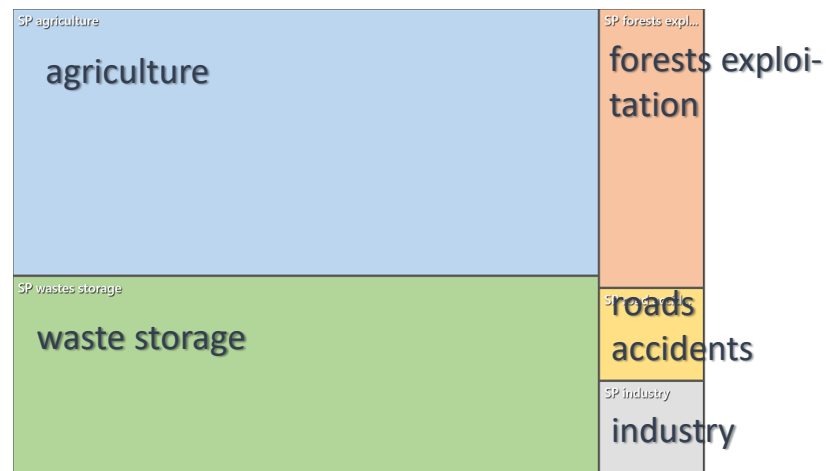
### causes of air pollution



### causes of water pollution



### causes of soil pollution



## Q17 - 18: Perceived training needs

**Themes/ topics** for which it is necessary the organization of informative activities carried out by specialists

<p><i>MIT citizens awareness and participation</i></p> <p><b>citizens awareness and participation</b></p>	<p><i>MIT general pollution...</i></p> <p><b>general pollution aspects</b></p>
<p><i>MIT waste management</i></p> <p><b>waste management</b></p>	

**information provided in modules** should emphasize on:

- environmental projects financing
- good practices in pollution prevention in rural communities



Transilvania  
University  
of Braşov

