

Environmental Education for Sustainable Rural Communities

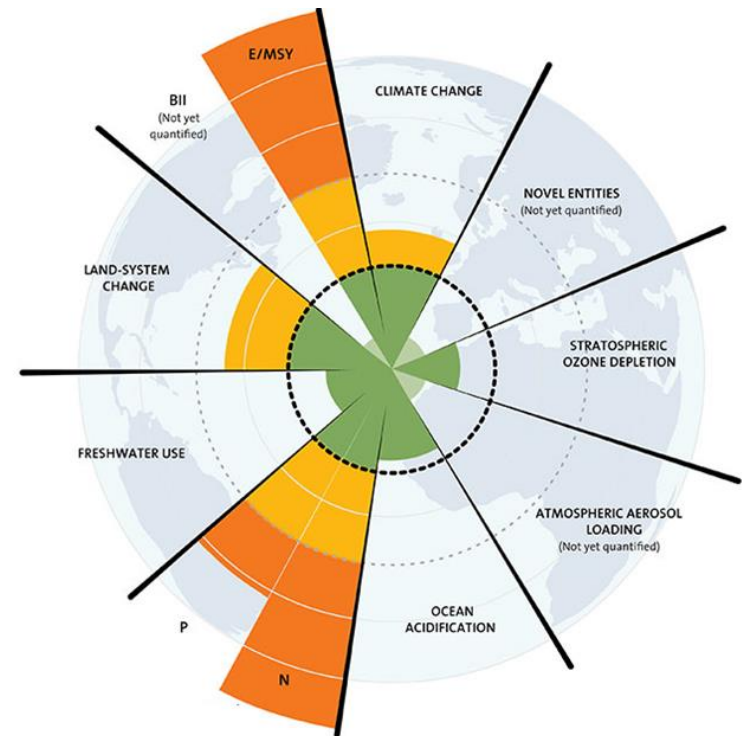
Dana Perniu, Camelia Draghici

Universitatea Transilvania din Brasov

ENVIRONMENTAL MANAGEMENT & ENVIRONMENTAL EDUCATION.
RESULTS, POLICIES, SYNERGIES, AND GOOD PRACTICES
Bucharest University of Economic Studies, Romania
4 November 2022

SUSTAINABLE DEVELOPMENT (SD)

GLOBAL LEVEL: setting the scene for achievement of SD

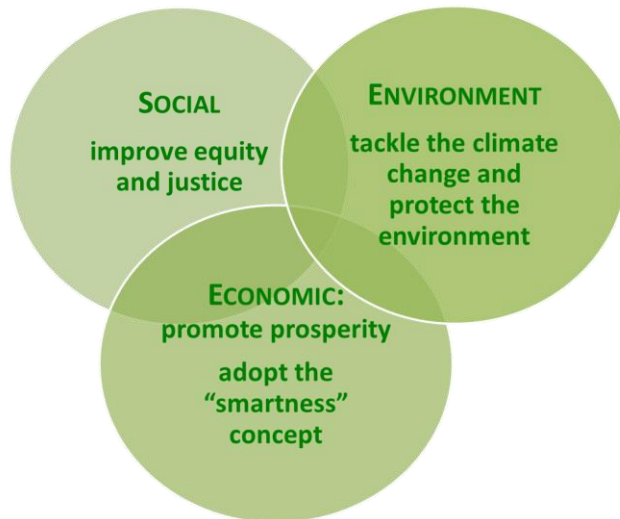


MACRO/MEZO LEVEL: setting and implementing the SD strategies

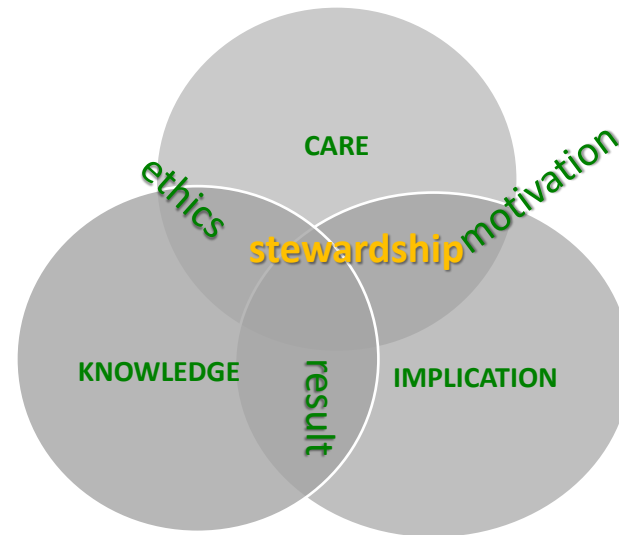
SUSTAINABLE COMMUNITY

acts as a system characterized by complex structure and multiple interactions

integrates the three SD dimensions:



approaches the SD stewardship concept:



MICRO LEVEL: actions with environmental positive/negative impact

Individual actions

behaviors meant to protect the environment
are based on informed decisions – knowledge
positive feelings towards the natural environment
rules / norms targeting environmental protection
are based on natural environment valuation

DATA INTERPRETATION

Q: Which is the first word/ expression that comes to your mind when you think about the natural environment in your city/ community?

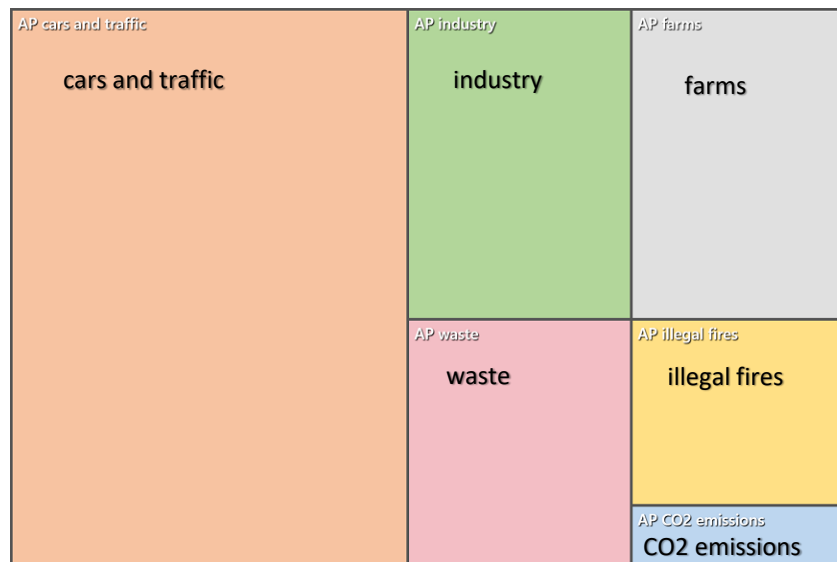


Human-nature connectedness (HNC) recognition

- key concept for leveraging sustainability changes in socio-ecological systems
- **information provided in modules** should emphasize the cognitive dimension of HNC to develop knowledge and pro-environmental behavior

DATA INTERPRETATION

Q3-5: Perceived environmental quality
Q3: air quality

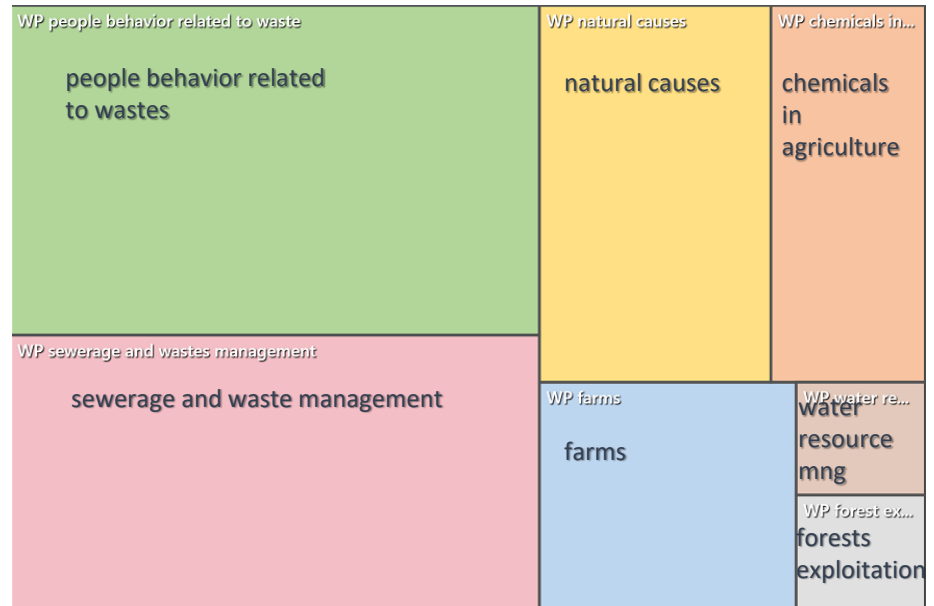


information provided in modules should emphasize on:

- environmental projects financing
- good practices in air pollution prevention in rural communities

DATA INTERPRETATION

Q3-5: Perceived environmental quality
Q4: water quality



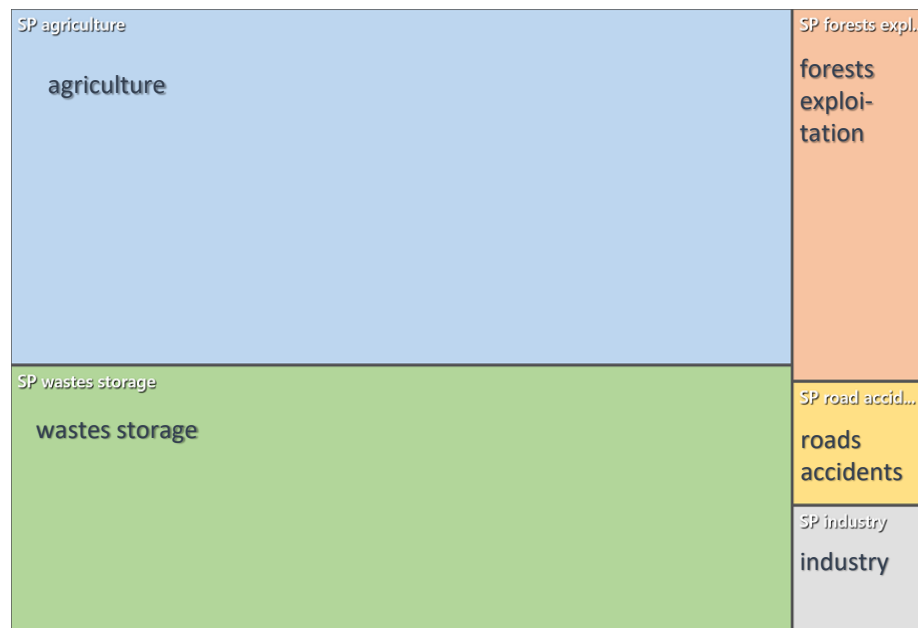
information provided in modules should emphasize on:

- environmental projects financing
- good practices in water pollution prevention in rural communities both at administrative and individual levels
- basic scientific information about polluted water effects on health and environment

DATA INTERPRETATION

Q3-5: Perceived environmental quality

Q5: soil quality



information provided in modules should emphasize on:

→ good practices in soil pollution prevention in rural communities both at administrative and individual levels

DATA INTERPRETATION

Q17 - 18: Perceived training needs

<small>MT citizens awareness and participation</small> citizens awareness and participation	<small>MT general polluti...</small> general pollution aspects
<small>MT waste management</small> waste management	

Themes/ topics for which it is necessary the organization of informative activities carried out by specialists

Target groups to whom the informative activities should be dedicated:

- all citizens
- children
- vulnerable population (roma)

EnvEdu - OERs project

- develops learning opportunities for rural citizens, based on information addressing the natural environment protection envisioning sustainable development in rural communities;
- aims to develop an integrated understanding of the impact of human activities on natural environment in order to take informed decisions related to own actions and to behave in such manner to adopt sustainable development practices.



Transilvania
University
of Braşov



Acknowledgement

“Environmental Education – OERs for Rural Citizens (EnvEdu – OERs)”

project funded with support from the Education, Scholarships, Apprenticeships and Youth Entrepreneurship Programme (ESAYEP) EEA Grants 2014-2021



Transilvania
University
of Braşov

